



**KIM LIGHTING**

Wall Forms® **WF23**  
Shallow Cutoff Face Surface Mount, Round

revision 6/17/11 • kl\_wf23\_spec.pdf

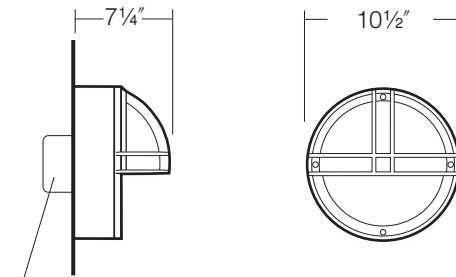
Type:  
Job:  
Catalog number:

**Approvals:**

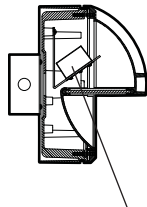
**WF23** / / /  
Fixture Electrical Module Finish Options  
See page 2

Date:  
Page: 1 of 2

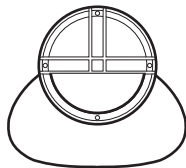
## Specifications



J-box in wall by others  
**Shallow Cutoff Face  
Surface Mount**



**WF23 with LED**



Light distribution  
Shallow Cutoff Face

**Surface Mount:** Die-cast, low copper (<0.6% Cu) aluminum alloy with double side walls. Zinc plated steel mounting plate supplied for mounting to standard 3" or 4" junction box.

**Face Plate:** Die-cast, low copper (<0.6% Cu) aluminum alloy with vertical and horizontal double ribs covering the full hemisphere. Ribs are minimum 5/8" depth and 3/16" thickness. Secures to housing with four stainless steel captive socket head screws.

**Shallow Cutoff Face:** Solid upper half protruding 3 3/4" from housing and concave lower half.

**Lens:** Flat tempered glass, 3/16" minimum thickness with internal sandblast. Retained in face plate and sealed with a one-piece silicone gasket.

**LED Optical System:** A total of 9 LED emitters configured in a rectangular array comprised together as a module. One (1) module for 9 LED version and two (2) modules for 18 LED version. Available in 3500K and 5100K.

**LED Driver:** Rated for 9 or 18 LED. Universal voltage from 120 to 277V with a ±10% tolerance. -40°F starting temperature. All drivers are Underwriters Laboratories recognized.

**Finish:** Super TGIC thermoset polyester powder coat paint, 2.5 mil nominal thickness, applied over a titanated zirconium conversion coating; 2500 hour salt spray test endurance rating. Standard colors are Black, Dark Bronze, Light Gray, Stealth Gray®, Platinum Silver, or White. Custom colors are available.

**Finishing Items:** Electrical modules and face plates. Each set of finishing items shall be in one container, clearly marked with the fixture catalog number.

**CAUTION:** Fixtures must be grounded in accordance with national, state, and/or local electrical codes. Failure to do so may result in serious personal injury.

### Listings and Ratings

ETL <sup>1</sup> to UL Standard 8750	IP66 Rated	CE	25C Ambient
--------------------------------------	------------	----	-------------

<sup>1</sup>Suitable for wet locations

KIM LIGHTING RESERVES THE RIGHT TO CHANGE SPECIFICATIONS WITHOUT NOTICE.

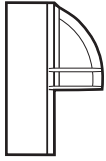


U.S. PATENTS: D385,054, D381,452, D378,621

Type:

Job:

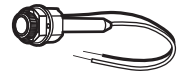
Page: 2 of 2



## Standard Features

<b>Fixture</b>	Cat. No. <b>WF23</b>																					
<b>Electrical Module</b> <b>LED</b> = Light Emitting Diodes  <table border="1" data-bbox="162 756 373 871"> <thead> <tr> <th>Lamp Watts</th> <th>Lamp Type</th> <th>Line Volts</th> </tr> </thead> <tbody> <tr> <td>30</td> <td>LED</td> <td>277</td> </tr> </tbody> </table>	Lamp Watts	Lamp Type	Line Volts	30	LED	277	Cat. Nos. for Electrical Modules available:  <table border="1" data-bbox="487 693 1071 892"> <thead> <tr> <th colspan="3">LED</th> </tr> </thead> <tbody> <tr> <td><input type="checkbox"/> 9L3KUV<sup>1</sup></td> <td><input type="checkbox"/> 18L3KUV<sup>1</sup></td> <td></td> </tr> <tr> <td><input type="checkbox"/> 9L5KUV<sup>1</sup></td> <td><input type="checkbox"/> 18L5KUV<sup>1</sup></td> <td></td> </tr> <tr> <td>Lamp</td> <td>LED</td> <td>LED</td> </tr> <tr> <td>Socket</td> <td>N/A</td> <td>N/A</td> </tr> </tbody> </table> <p><sup>1</sup>For LED, 9L = 9LED Emitters; 18L = 18 LED Emitters; 3K = 3500K color temperature; 5K = 5100K color temperature; UV = Universal Voltage from 120 to 277V with a ± 10% tolerance.</p>	LED			<input type="checkbox"/> 9L3KUV <sup>1</sup>	<input type="checkbox"/> 18L3KUV <sup>1</sup>		<input type="checkbox"/> 9L5KUV <sup>1</sup>	<input type="checkbox"/> 18L5KUV <sup>1</sup>		Lamp	LED	LED	Socket	N/A	N/A
Lamp Watts	Lamp Type	Line Volts																				
30	LED	277																				
LED																						
<input type="checkbox"/> 9L3KUV <sup>1</sup>	<input type="checkbox"/> 18L3KUV <sup>1</sup>																					
<input type="checkbox"/> 9L5KUV <sup>1</sup>	<input type="checkbox"/> 18L5KUV <sup>1</sup>																					
Lamp	LED	LED																				
Socket	N/A	N/A																				
<b>Finish</b> Super TGIC powder coat paint over a titanated zirconium conversion coating.	Color:    Black    Dark Bronze    Light Gray    Stealth Gray®    Platinum Silver    White    Custom Colors <sup>2</sup> Cat. No.: <input type="checkbox"/> <b>BL</b> <input type="checkbox"/> <b>DB</b> <input type="checkbox"/> <b>LG</b> <input type="checkbox"/> <b>SG</b> <input type="checkbox"/> <b>PS</b> <input type="checkbox"/> <b>WH</b> <input type="checkbox"/> <b>CC</b>  <sup>2</sup> Custom colors subject to additional charges, minimum quantities and extended lead times. Consult representative. Custom color description: _____																					

## Optional Features

<b>Fusing</b> Cat. No. <input type="checkbox"/> <b>SF</b> <input type="checkbox"/> <b>No Option</b>	Single Fusing for 120V, and 277V primary. 
---	---